

Beef Project



Monthly Lesson Plan
April 2022



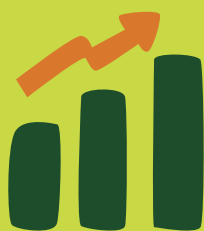
Upcoming Deadlines

- ✓ April 18th or 19th – MQA (Meat Quality Assurance) Training
- ✓ June 1st – All Beef (breeding & market) ID'd as project animals in 4HOnline



Project Progress

Suggest the following as things your members should work on or accomplish with their project this month:



- E Record Books:** Update their "Equipment/Supplies Inventory" (p. 3) & "Animal Inventory" and/or "Animal Purchase" pages (p. 4&6)
- Hands On:** Members should begin training their beef to stand to be groomed. Check out our beef grooming video:
- Knowledge:** Members should review basic beef healthcare (Beef Resource Handbook Ch. 5 or our Vet Chat video):
- Other:** Brainstorm a topic for their Beef educational poster and/or demonstration.
- Other:** Update your calendar with 2022 Animal Project Dates

Beef Grooming Video



Beef Vet Chat Video



Opportunities

See 4-H Calendars for full details & more recently added events

- April 2 – Blow & Go Show – El Paso County 4-H
- April 18th or 19th – ADCO Meat Quality Assurance Training (mandatory)
- April 30th – ADCO Speech & Demonstration Contest



ADAMS COUNTY
COLORADO STATE UNIVERSITY
EXTENSION



Beef Project



April 2022

Attached Activities

Use these suggested activities at club project meetings to increase member knowledge and keep members engaged in their project.

Group: Demonstrating Fitting Equipment

- This activity introduces members to beef fitting equipment and how to use them.

Individual: Locating Beef Parts Page

- This activity page can be completed by beef members at home and will help to review/learn parts of their beef animal.

for more Beef project activities, order the National 4-H Curriculum "Beef Helpers Guide" through the 4-H Office



Fun Fact

A cow can drink up to 30 gallons of water in a day. That's the same amount as a bathtub!



Timely Tips to Share

Spring showers may bring wet livestock pens which can lead to foot rot which causes swelling and lameness in cattle. To prevent foot rot, keep cattle in a dry, clean area. Treatment can include antibiotics and/or a copper sulfate footbath.



Resources



- The following & more can be found on the ADCO 4-H Beef Project Webpage: <http://adams4h.org/4-h-beef-project/>
 - 2022 Animal Project Save the Dates
 - Beef Resource Handbook (Ohio State)
 - Animal Care Form
 - E Record Books
 - Fourcast Newsletter Signup
 - Project Tipsheets
- Fairgrounds Livestock Scale – can always be used by 4-H members with appointment. Contact Kenzie to schedule a time.



4-H Agent - Kenzie Kimmel

303-637-8109 / kkimmel@adcogov.org



Beef Superintendent - Steve Sterkel

Sterkel_livestock@hotmail.com



ADAMS COUNTY
COLORADO STATE UNIVERSITY
EXTENSION



Demonstrating Fitting Equipment

Using the right equipment makes the job to be done easier and faster. In order to use the right equipment it is necessary to know what equipment is available and how to use it correctly. This activity will give your group an opportunity to discover new ways to use various tools and how to communicate with others.

Getting Started

This activity may be divided into two sessions. In the first session the youth present equipment presentations. In the second session they could actually use some of the equipment to prepare a calf for show.



First place several pieces of beef tack equipment in a sack. Then ask each participant to take turns reaching in the sack and pulling out an item. With the assistance of an adult or older youth ask each youth to prepare and present a short demonstration about how to use that piece of equipment. Then divide into three groups and let each group prepare a calf for show. Encourage experienced youth to make suggestions as members work to improve their fitting skills.

BarnTalk

Shooting the Breeze

- What was the most difficult grooming procedure to learn? Why?
- What special grooming techniques did you learn?

Show Me the Beef

- What are some different ways to groom a calf?
- Why is each calf groomed somewhat differently?
- Why should you make your animal look its best through fitting and showing?

Where's the Beef?

- How does personal grooming affect the way you feel when you meet other people?
- What sorts of messages does personal grooming communicate?

Beef's Future

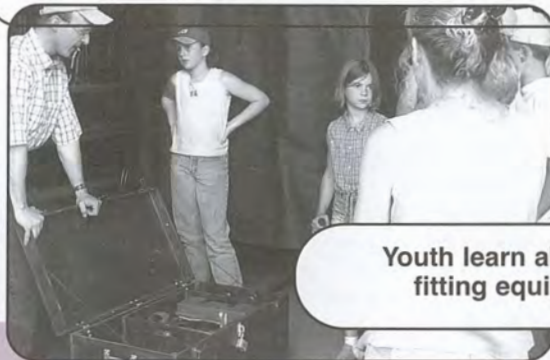
- How can you tactfully help someone whose personal grooming gets in the way of being accepted by others?

Beef Project Skill: Using beef fitting equipment
Life Skill: Communicating with others
Education Standard: NL-ENG.K-12.4
Success Indicator: Identify and demonstrate the use of fitting equipment.

Time Involved: Two hours

Suggested Group Size: 3 to 25

Materials Needed: Equipment used for fitting and showing beef cattle that would normally be included in a tack box, three gentle calves for demonstrating, a sack to hold all the equipment.



Youth learn about beef fitting equipment.



Beef Tack Box Equipment

- Water buckets
- Feed pans
- Show halters
- Show sticks
- Safety pins
- Scotch comb
- Rice root brush
- Wash brush
- Rubber comb
- Scissors
- Tail ties
- Tail comb
- Clippers
- Adhesive
- Show sheen
- Baby powder
- Blower
- Water hose and nozzle
- Padlock
- Magic marker
- Stall cards
- Extension cords
- Electrical adapter
- Pencil and pen
- Spare rope halter
- Neck ropes
- Health kit
- First aid kit

Beef It Up!

1. Have the youth plan and conduct a mock beef showmanship contest. Let members take turns being the judge. Discuss showmanship and ethics. Involve older youth to demonstrate both good showmanship and unacceptable or questionable showmanship practices.
2. See if your local show allows herdsmanhip displays. If they do, have youth develop a plan for group herdsmanhip.



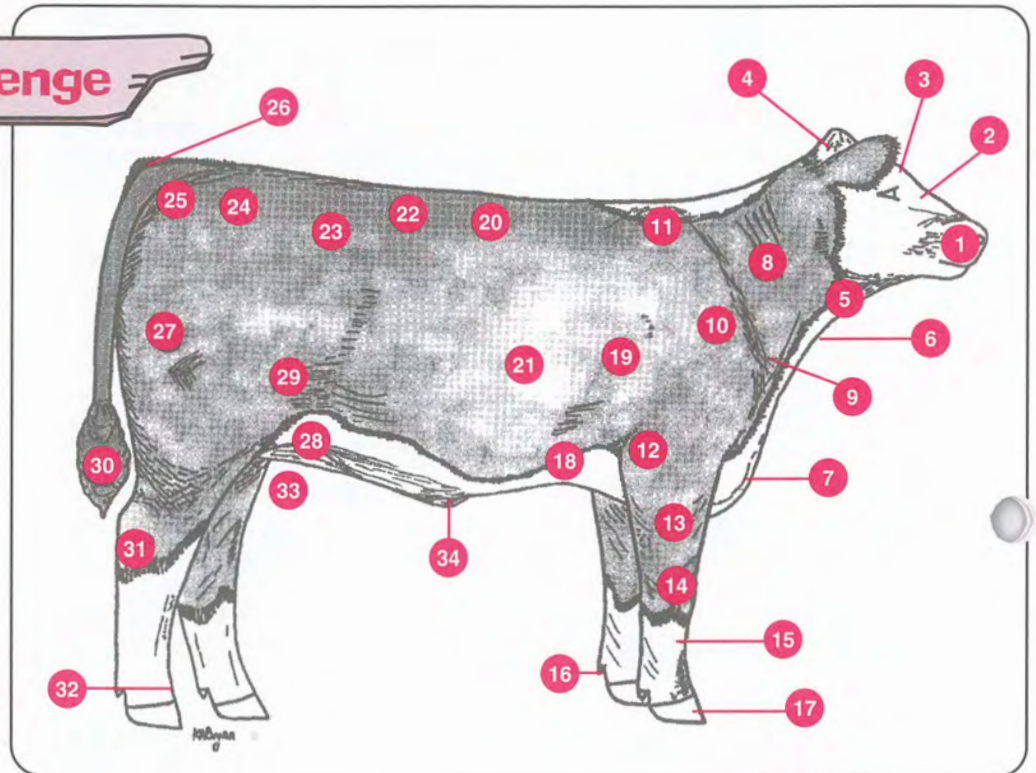
Locating Beef Parts

Beef Project Skill: Selecting beef animals
Life Skill: Communicating with others
Education Standard: NS.K-4.3 Life Science
Success Indicator: Identify 30 beef body parts.

Do you know where the stifle on a beef animal is located? The hock, the poll, the brisket? In order to better understand the beef project and be able to select quality animals you need to know the basic body parts.

Taking on the Challenge

There are 34 parts numbered on the outline of the beef animal. Identify each part. Many of the parts listed in the Beef Parts Word Bank have hints to help you locate them. Explain the locations of each part to your helper.



Beef Parts Word Bank

- | | | |
|---|--|--|
| _____ Back (or Top) - Along the top from the point of the shoulders to the last rib | _____ Forerib - Right behind the shoulder | _____ Pastern - Joint right above the hoof |
| _____ Brisket - Chest of the calf | _____ Rear Flank - Opposite of fore rib in front of rear leg | _____ Pin Bone - Bone by tail head |
| _____ Cannon bone - From knee to pastern and from hock to pastern | _____ Hindquarter | _____ Poll - Top point of head |
| _____ Dewclaw - Back of hoof | _____ Hock - Middle joint of rear leg | _____ Point of Shoulder - Where front legs meet along the top line |
| _____ Dewlap - Flap of skin on the throat | _____ Hoof | _____ Ribs |
| _____ Elbow - Joint of front leg at the fore flank region | _____ Hook or Hip Bone - Where line ties into hip | _____ Rump - Hip |
| _____ Face | _____ Knee - Middle joint of front leg | _____ Shoulder |
| _____ Forearm - Knee to elbow of front leg | _____ Loin Muscle - From the last rib to the start of the hip | _____ Stifle - Muscle at rear flank |
| _____ Forehead - Between eyes | _____ Lower forerib (Heart Girth) - Along belly line behind front legs | _____ Switch - End of tail |
| | _____ Muzzle - Nose | _____ Tailhead - Where tail attaches to calf |
| | _____ Navel - Center of belly | _____ Throat |
| | _____ Neck | _____ Top of Shoulder |
| | | _____ Udder (female) Cod (steer) |
| | | _____ Scrotum (bull) - Between rear legs |

BarnTalk

Shooting the Breeze

- How did you go about determining which part of the animal went where?

Show Me the Beef

- Why is it important to know the parts of a beef animal?

Where's the Beef?

- How will knowing beef parts help you in talking to your vet?

Beef's Future

- How will knowing the parts be useful to you as you judge beef?



FACTS



Breed Word Bank

- | | |
|-------------|-------------|
| ANGUS | MURRAY-GREY |
| BARZONA | NORMANDE |
| BRAHMAN | PINZGAUER |
| BRANGUS | RANGER |
| CHAROLAIS | SALERS |
| CHIANINA | SCOTCH |
| DEVON | HIGHLAND |
| GALLOWAY | SIMMENTAL |
| GELBIEH | SHORTHORN |
| HEREFORD | TARENDAISE |
| LIMOUSIN | WATUSI |
| MAINE-ANJOU | |

Breed Word Find

A	B	R	A	N	G	U	S	C	E	H	J	L	S
N	A	N	G	U	S	E	P	A	R	T	E	V	C
B	R	A	H	M	A	N	L	Y	L	S	Z	L	O
M	Z	C	C	B	D	W	G	B	I	E	I	I	T
U	O	K	H	M	O	D	A	A	V	M	R	S	C
R	N	V	A	I	E	W	T	T	O	I	A	S	H
R	A	B	R	V	A	N	C	U	U	E	E	F	H
A	Y	G	O	H	E	N	S	I	J	S	L	H	I
Y	A	N	L	R	M	I	I	S	O	P	I	E	G
G	W	M	A	I	N	E	A	N	J	O	U	R	H
R	O	T	I	R	R	E	G	N	A	R	X	E	L
E	L	Y	S	I	M	M	E	N	T	A	L	F	A
Y	L	Z	A	B	C	E	D	N	A	M	R	O	N
D	A	E	F	P	I	N	Z	G	A	U	E	R	D
S	G	S	H	O	R	T	H	O	R	N	C	D	E



It's never too early to start learning about beef.

1. On your own animal identify 10 parts.

Beef It Up!

